

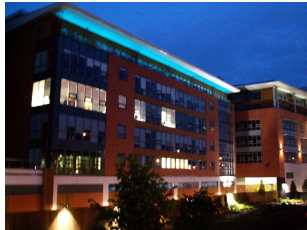


## Upcoming Events



### Johannesburg, South Africa: May 12, 2011

[Techniche](#), Multisource's annual conference and open day on telecommunications is to be held on Thursday May 12, 2011 at The Forum in Bryanstown, Johannesburg. Azotel will be presenting at this event where the latest wireless telecommunications trends are debated among over 200 of the leading experts in the field. The objective of the event is to drive customer adoption of products and services and to allow for customers to gain more effective use of such technology.



### Cork, Ireland: June 23, 2011

Next month on Thursday June 23, 2011 Azotel will be hosting a 1-Day overview of the SIMPLer platform. The objective of the day's training is to provide a refresher to the existing base of Azotel Enabled Operators, particularly those that have been with us for a number of years and may not be aware of the comprehensive set of functionality now contained within the platform. For further details on pricing etc, please contact us at [events@azotel.com](mailto:events@azotel.com)

## Franchise Opportunities in Botswana



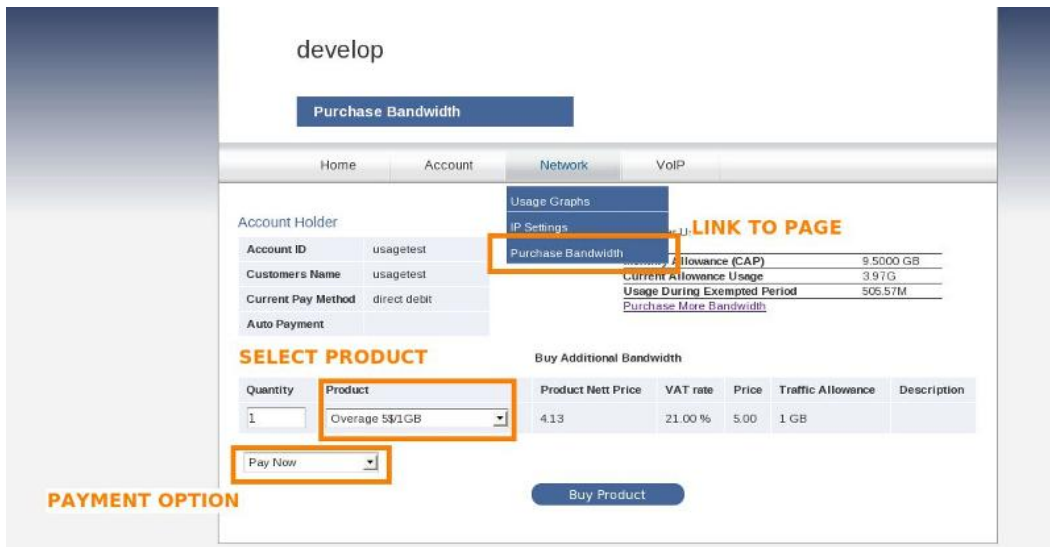
We would like to take the opportunity to thank all those who have expressed an interest in learning about our franchise programme for Botswana. In the coming months the first units will be deployed in Gaborone and Francistown. If you are interested in assisting with the unit builds, please contact [franchise@azotel.com](mailto:franchise@azotel.com).

## Recently Completed Features

### EUP - Bandwidth Purchase

This new feature allows for operators to set up the End User Portal (EUP) allowing their customers to purchase additional

bandwidth. SAND (Subscriber Auto Notification/Disconnection) enabled systems enable operators to track and control customer bandwidth usage allowing for immediate additional bandwidth to be purchased by customers close to or exceeding their bandwidth limit. This then allows for continuation of broadband usage in the case of the former or immediate re-connection in the case of the latter.



[Click here to view the full feature description.](#)

### Customer GPS Update Tool

This application allows for determination of GPS co-ordinates when only the customers addresses are known. Once these co-ordinates are known, the mapping features of SIMPLer can then be utilized. Customer records are also automatically updated.

The functionality of this tool relies on Google Maps API to provide just an estimation of or 'best guess' location and so requires further verification to give a more exact location.

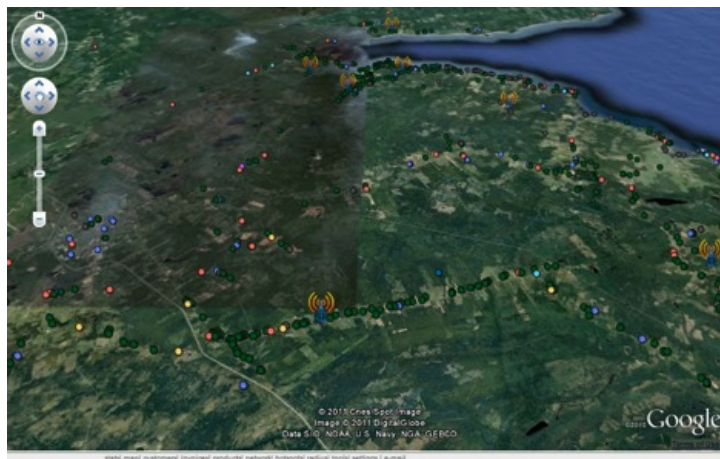


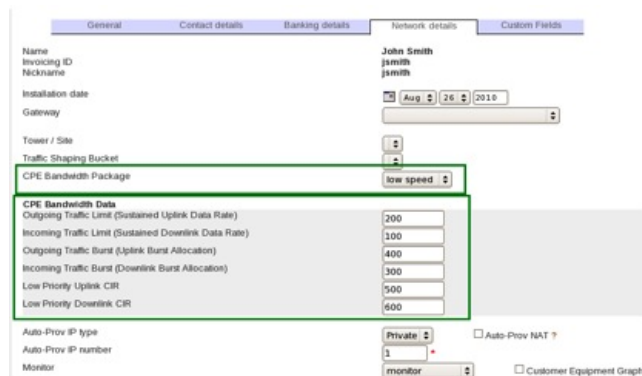
Fig 3 - Sample Map Showing Customers of Various Statuses

[Click here to view the full feature description.](#)

### MIR/CIR Bandwidth Settings

This new feature which has been added to SIMPLer provisioning tool allows SIMPLer installers to provision MIR (Maximum Information Rate) and CIR (Committed Information Rate) on Canopy and Ubiquity Nanostation Subscriber Modules. It enables the operator to define standard "CPE MIR/CIR" packages and assign these to customers.

The original values can also be overridden on a customer-by-customer basis. In addition to setting these values during automatic provisioning, this tool also allows for the reading and updating of values from within the tool.



[Click here to view the full feature description.](#)

## Upcoming Features

Work is currently in progress on the following features:

### **SIMPLer API**

Work is currently underway to allow for API access to SIMPLer. Initially, the focus will be on allowing operators to use external applications or websites to add new customers to SIMPLer. In this way, operators can draw up their own sign up forms and/or sales and marketing applications to gather the required information to be added to SIMPLer.

## About Azotel

[Azotel](#) is a world leader in the development of integrated Core Network and OSS solutions (Operational Support Systems including subscriber management and operations automation). The company equips Operators with the technology and management services required to build out commercially successful broadband networks anywhere in the world. Azotel currently powers multiple broadband networks across [Ireland, Europe, Africa, Canada and the United States](#).

Azotel SIMPLer reduces the costs and simplifies the business of delivering telecommunications services. The SIMPLer platform delivers everything a wireless Operator needs (other than the radio equipment) which can be seamlessly integrated with any access network such as Motorola, Ubiquity, Mikrotik, Alvarion etc.

Simplification is the key to the Azotel approach. By following a prescribed simple business process, we significantly reduce the operating costs and increase reliability of the services delivered to end-users. This in turn leads to much higher satisfaction levels and less churn amongst subscribers.

Azotel was first deployed in 2002 and today has in excess of 50 Operators worldwide. Traditionally, Operators tend to build up their core network and management system using various vendors to address all necessary functions. SIMPLer delivers all this functionality via **a single interface**.

Learn more by visiting us on the web at [www.azotel.com](http://www.azotel.com) or contact us at [info@azotel.com](mailto:info@azotel.com).

## To Find Out More

If you're an existing customer, then the latest versions of all of our customer documents are accessible via the "Documentation" link in SIMPLer. Descriptions of recently-developed features are available on our [external portal](#).

If you're a potential customer, then why not [sign up for a demonstration](#) of our SIMPLer platform or [request a quote](#) from a distributor/reseller near you.



You can also follow us on Twitter for updates on new features and other industry news.

[Forward email](#)



This email was sent to [oharej@azotel.com](mailto:oharej@azotel.com) by [news@azotel.com](mailto:news@azotel.com) | Instant removal with [SafeUnsubscribe™](#) | [Privacy Policy](#).

Azotel Technologies Ltd. | 3rd Floor, | River House, | Blackpool Park | Cork | Ireland