



Introducing the PTP 500 Series

Point-to-Point Solutions

High-Performance, Long-Distance
Connectivity Virtually Anywhere



*MOTO***WI**⁴



Contents

- Product Overview
- Applications
- Competition
- Part Numbers and Pricing





Product Overview



PTP 500 Series Overview



- 5.4 and 5.8 GHz unlicensed bands
- Up to 105 Mbps Ethernet data rate
- Up to 155 miles (250 km) range
- Built-in lightning protection
- Robust security – unique scrambling plus optional 128/256-bit AES Encryption
- 10 / 100 Base T (RJ-45)
- Small footprint
- Easy to deploy and use



**PTP 500 Integrated
with dual built-in
antennas**



**PTP 500 Connectorized –
high-gain advantage of
external antennas**



**Power Indoor Unit (PIDU Plus) –
Power-over-Ethernet to outdoor units**

Same Award-Winning Technology



Multiple-Input Multiple-Output (MIMO) – increased tolerance to signal fading

Intelligent Orthogonal Frequency Division Multiplexing – greater resistance to multi-path interference and selective signal fading, plus higher spectral efficiency

Adaptive Modulation – sustains the maximum throughput while maintaining highest link quality

Advanced Spectrum Management with *i*-DFS – samples the band up to 400 times a second and automatically switches to the clearest channel

Best-in-Class Radios – highest system gain in the industry

Network Management



Option 1: Remote management via Web browser



The screenshot shows a web browser window with the title "Motorola PTP 54500 Full - System Administration - Configuration (IP=10.10.10.10) - Microsoft Internet Explorer". The address bar shows "http://10.10.10.10/top.cgi?512". The page has a blue header with the Motorola logo and "MOTOROLA POINT-TO-POINT WIRELESS SOLUTIONS". A left sidebar contains a navigation menu with items: Home, Status, « System Administration, « Configuration (highlighted), LAN Configuration, Save And Restore, » Statistics, « Installation Wizard, Graphical Install, Software Upgrade, Spectrum Management, » Remote Management, and » Diagnostics Plotter. The main content area is titled "System Configuration" and contains the text "This page controls the day to day configuration of the PTP wireless unit." Below this is a table for "Equipment" configuration.

Attributes	Value	Units
Link Name	Jim's Office	
Link Location		
Master Slave Mode	Master	
Link Mode Optimisation	IP Traffic	
Max Receive Modulation Mode	64QAM 0.83	
Max Transmit Power	15	dBm

At the bottom of the form are two buttons: "Submit Updated System Configuration" and "Reset Form".

Option 2: Integrate with existing network management systems:

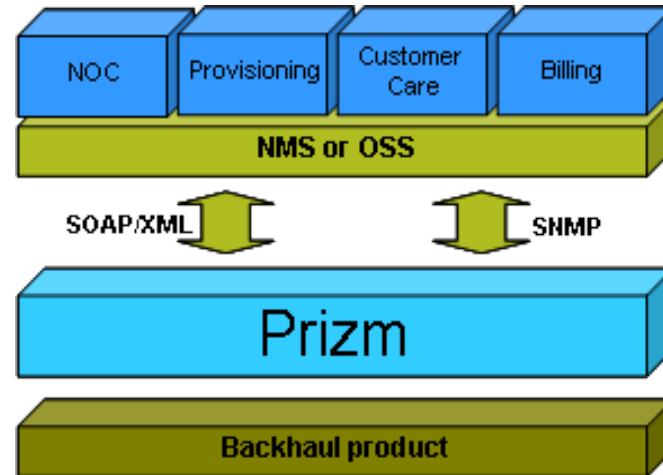
- SNMP protocol v1 and v2c:
 - MIB-II
 - Motorola PTP MIB
- Email alerts

Network Management



Option 3: Use Canopy® Prizm as network management system

- Supports remote software updates to PTP 400, 500 and 600 Series solutions
- Integrates with other OSS
- Supports open interfaces
- Software Development kit available
- Northbound interface allows other computer systems to “talk” to Prizm and make requests for transactions or data



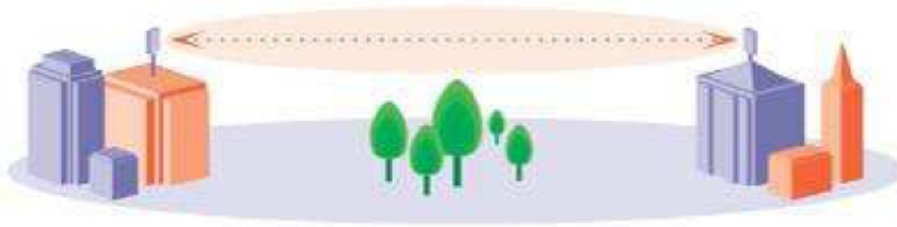
Warranties and Software Support



PTP 500 12-Month Standard Warranty	One-year limited warranty on all hardware components with 30-day repair and replacement for defective parts, plus minor software enhancements as available
PTP Link Guard All-Risk Extended Warranty *	Upgrades and extends the initial 12-month warranty to All-Risk equipment coverage with the 24-hour Advanced Replacement Program; provides coverage for any and all types of equipment damage, including lightning damage, dropped units, vandalism, fire and hardware failure
PTP Link Protector	Extends the standard 12-month warranty with 30-day repair-and-replacement terms through the second, third or fifth years of ownership; this option is typically chosen if one or more spare units are purchased
PTP Software Maintenance Contract	After the initial 12-month standard warranty, an annual Software Maintenance Contract is required to continue receiving software updates and 24 x 7 technical support

*** Replacement units are shipped from the UK on the next business day after receipt of a confirmed RMA. Motorola pays shipping costs in both directions.**

NLOS and LOS Performance



Line-of-Sight (LOS)
Up to **155 miles**



near-Line-of-Sight (nLOS)
Up to **25 miles**



Non-Line-of-Sight (NLOS)
Up to **6 miles**

MOTOROLA PTP LINKPlanner



Predict link performance before purchasing a PTP 500 solution

Plan and optimize a single PTP link or multiple links simultaneously

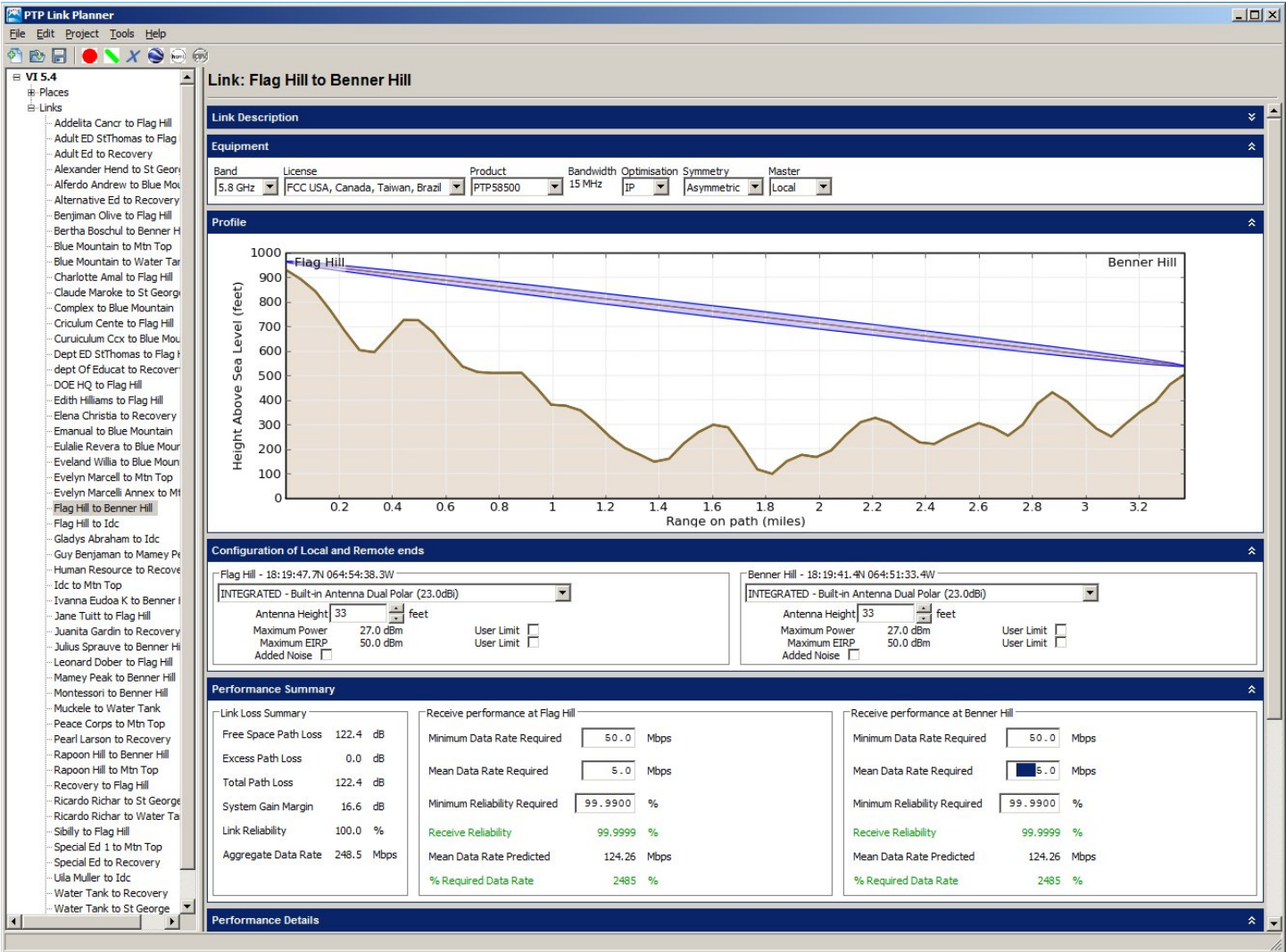
Receive a comprehensive overview of the entire wireless network via Google™ Earth

PTP LINKPlanner is the only tool that permits calculations for the PTP 500 Series

Perform path calculations for the entire PTP portfolio – both licensed and unlicensed systems

Plans links easily and quickly – ultimately will replace PTP Link Estimator

PTP LINKPlanner Results Page

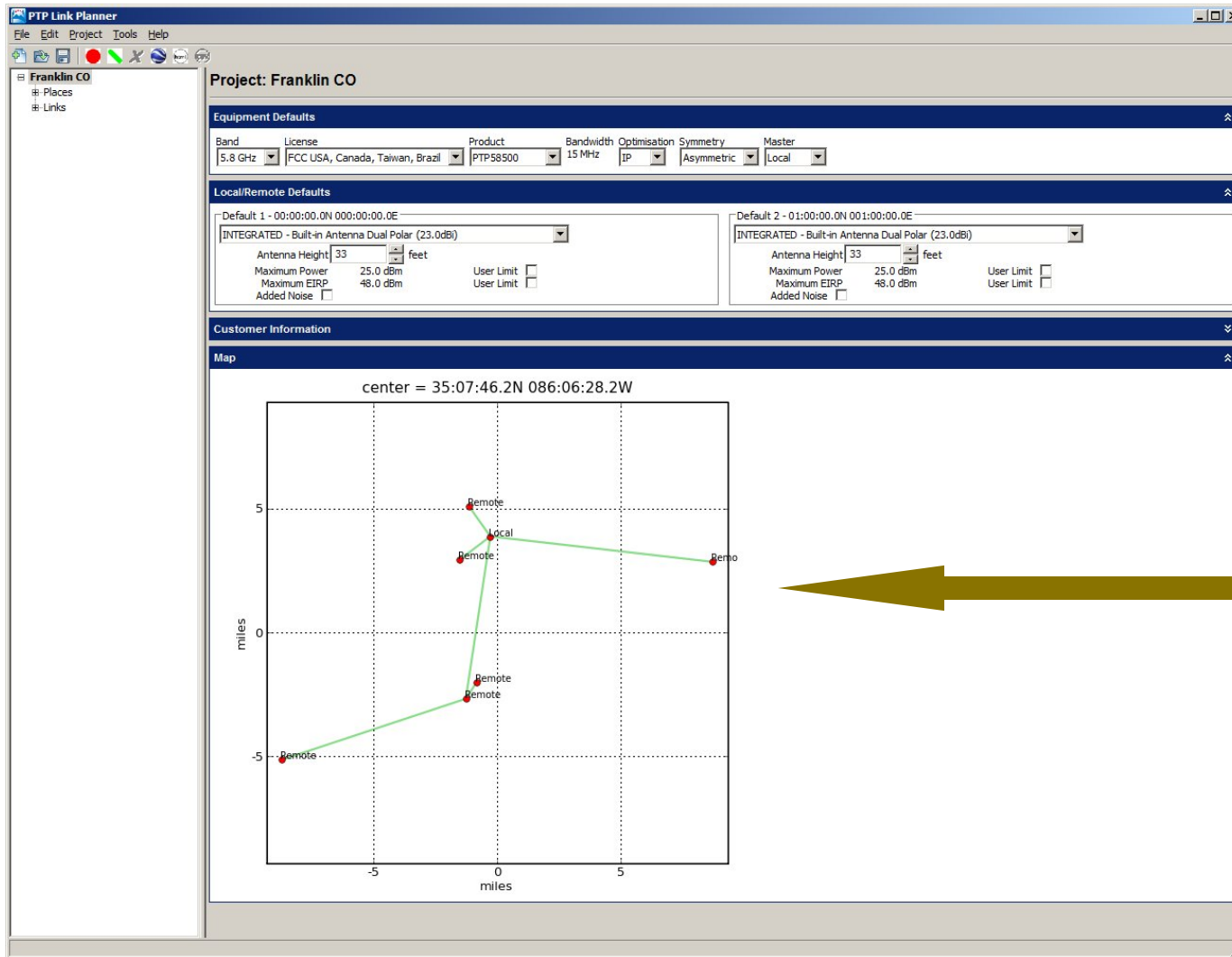


Path Profile

Configuration Detail

Performance Summary

Sample Network Overview Page



Network Map

PTP 500 Advantages



Carrier-class performance in non-line-of-sight and long-distance line-of-sight environments, over water and open terrain

Establish communications in previously inaccessible locations

Reliable, high-throughput operations even in severe weather conditions

Quick and easy deployment – requires no special training or expertise

Determine link performance prior to purchase with the PTP LINKPlanner

Fast ROI – typically less than one year



Applications

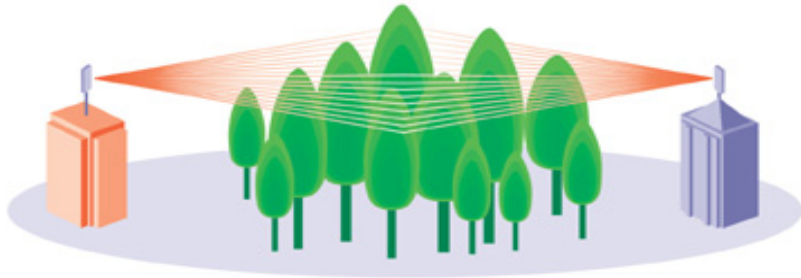


Typical Applications

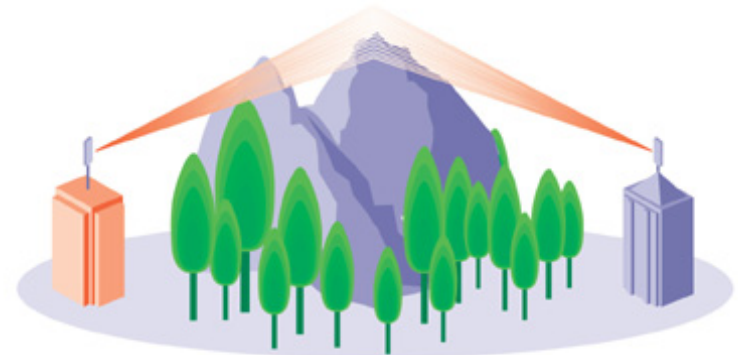


- High-speed wireless backhaul
- Video surveillance
- Data, voice and video communications
- Connectivity for high-bandwidth applications such as VoIP, multimedia, IP gaming, distance learning and telemedicine
- Building-to-building and campus connectivity
- Disaster recovery and temporary services

Connect Virtually Anywhere



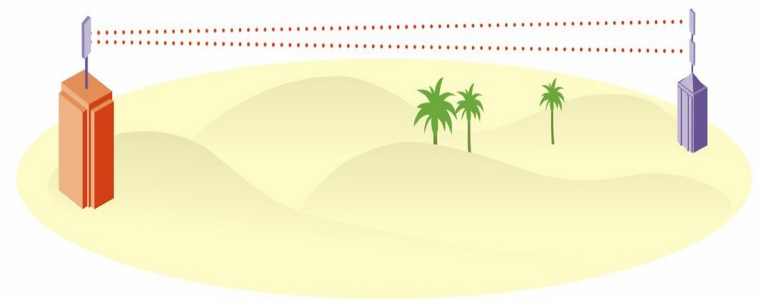
Through Trees



Over Hills

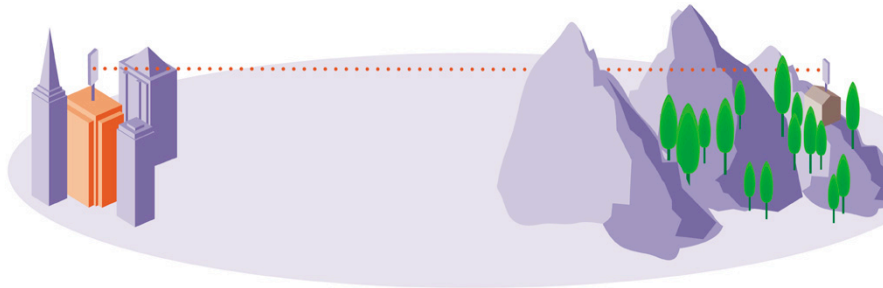


Around Buildings



Over Desert or Water

Connect the Unconnectable



Across Long Distances

..... PTP Wireless Link



In High-Interference Area

PTP 500 Value Proposition



Establish communications to facilities that may not be reached cost-effectively with wired connections

Remove network bottlenecks with high-throughput wireless backhaul

Establish cost-effective network redundancy or extend network reach without trenching new fiber

Establish connectivity in previously inaccessible or high-interference locations

Grow subscriber networks by establishing service in distant locations

Cost-effectively support bandwidth-sensitive applications such as multimedia and VoIP

Extend video surveillance capabilities beyond the constraints of a wired network



Competition



Competition



Characteristic	Redline AN80i (Turbo)	Alvarion 8100	Motorola PTP 500
Max. Ethernet Data Rate	90 Mbps	70 Mbps	105 Mbps
Channel Width	40 MHz	40 MHz	15 MHz
Range	< 50 Miles (80 km)	< 30 Miles (48 km)	Up To 155 Miles (250 km)
True DFS (selects best channel)	No	Yes	Yes
Maximum Spectral Efficiency	2.25 bps/Hz	1.75 bps/Hz	7 bps/Hz
Maximum System Gain (excluding antennas)	102 dB	107 dB	121 dB
MIMO	No	No	Yes
256-Bit AES	Yes	No	Yes
SNMP v3	No	No	In Future Release



Part Numbers and Pricing



Part Numbers and Pricing



Part Number	Description	MSRP
WB2857	PTP 58500 5.8 GHz Integrated	\$13,995
WB2858	PTP 58500 5.8 GHz Connectorized	\$13,995
WB2874	PTP 54500 5.4 GHz Integrated	\$13,995
WB2875	PTP 54500 5.4 GHz Connectorized	\$13,995
WB2978	LPU End Kit for PTP 500 Radios *	\$150

* Two kits per link for protection from damage caused by lightning